

**PRESENTING
POHORJE ULTRA TRAIL**

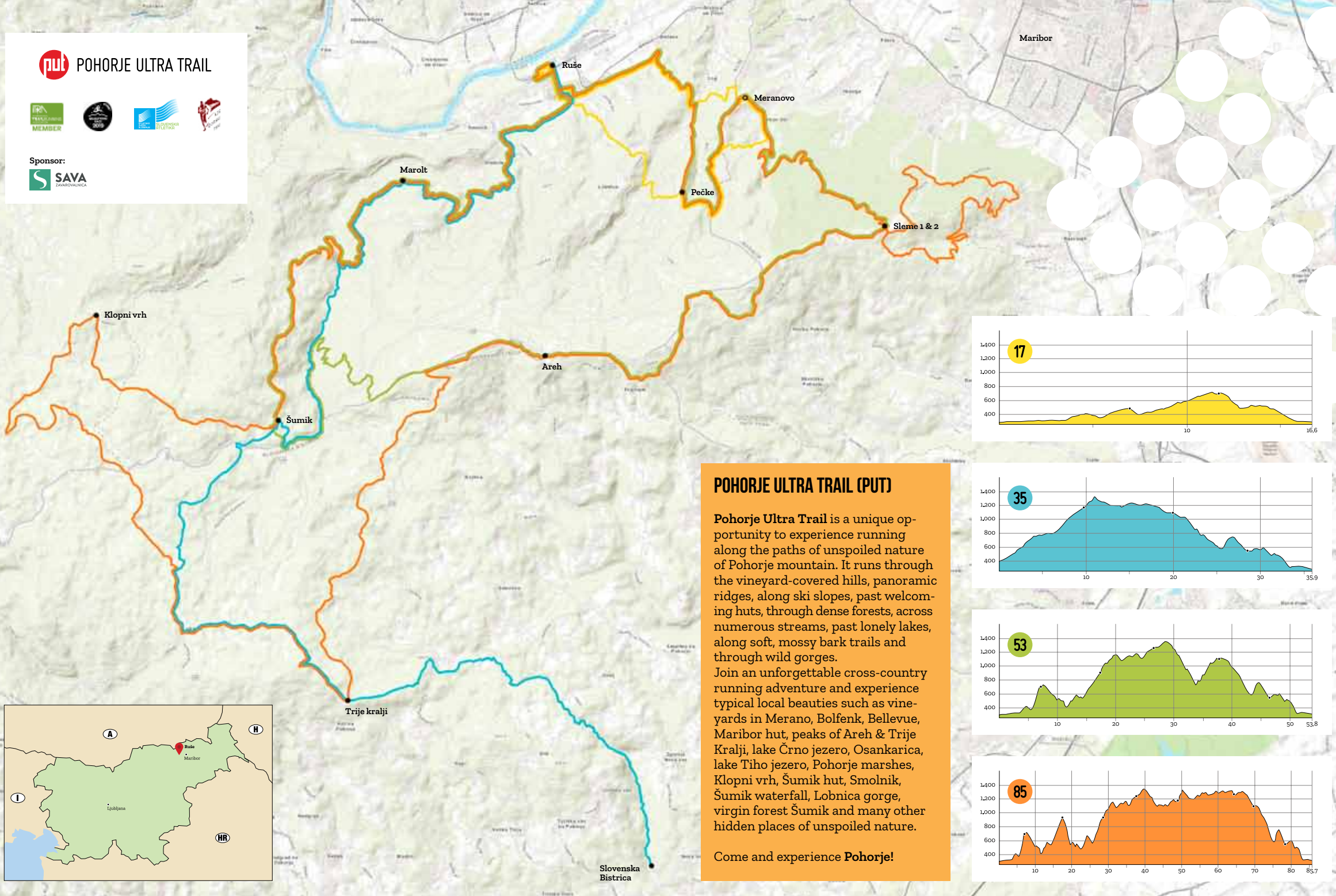
RUŠE, SLOVENIA, 24. 8. 2019



PUT POHORJE ULTRA TRAIL



Sponsor:

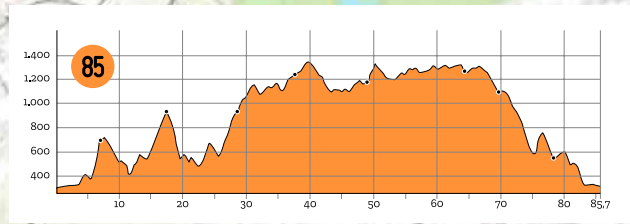
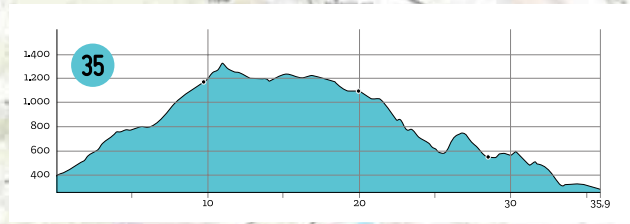
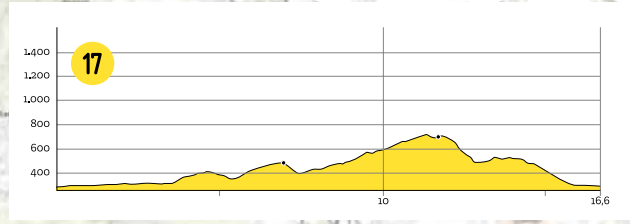


POHORJE ULTRA TRAIL (PUT)

Pohorje Ultra Trail is a unique opportunity to experience running along the paths of unspoiled nature of Pohorje mountain. It runs through the vineyard-covered hills, panoramic ridges, along ski slopes, past welcoming huts, through dense forests, across numerous streams, past lonely lakes, along soft, mossy bark trails and through wild gorges.

Join an unforgettable cross-country running adventure and experience typical local beauties such as vineyards in Merano, Bolfenk, Bellevue, Maribor hut, peaks of Areh & Trije Kralji, lake Črno jezero, Osankarica, lake Tiho jezero, Pohorje marshes, Klopni vrh, Šumik hut, Smolnik, Šumik waterfall, Lobnica gorge, virgin forest Šumik and many other hidden places of unspoiled nature.

Come and experience **Pohorje!**



Trail **PUT 85K** runs across the eastern & central part of Pohorje Massif.

Ruše - Pečke hut - Meranovo - Sleme - Triangular glade - Sleme - Bellevue - Areh - Trije kralji - lake Črno jezero - Osankarica - lake Tihó jezero - Klopni vrh - Šumik hut - Smolnik - Ruše

Start: 24. 8. 2019 at 4 am, Sports park in Ruše

Finish: Sports park in Ruše

Distance: 85,6 km

Elevation gain/loss: +3.670 m/-3.670 m

Aid stations: 8

Time limit: 22 hrs.

Maximal number of participants: 150

ITRA/UTMB points: 4 points

Trail **PUT 53K** runs across the eastern part of Pohorje Massif.

Ruše - Pečke hut - Meranovo - Sleme - Bellevue - Areh - virgin forest Šumik - Lobnica Gorge - Šumik hut - Smolnik - Ruše

Start: 24. 8. 2019 at 8 am, Sports park Ruše

Finish: Športni park Ruše

Distance: 53,7 km

Elevation gain/loss: +2.720 m/-2.720 m

Aid stations: 5

Time limit: 16 hrs.

Maximal number of participants: 200

ITRA/UTMB points: 3 points

The participation at **53K** trail counts as the **First Slovenian national championship** in trail running.

Trail **PUT 35K** runs through two gorges of the Pohorje Massif.

Slovenska Bistrica - Trije kralji - lake Črno jezero - Osankarica - Šumik hut - Lobnica Gorge - Ruše

Start: 24. 8. 2019 at 10 am, Vodarna, Slovenska Bistrica

Finish: Sports park in Ruše

Distance: 35,8 km

Elevation gain/loss: +1.570 m/-1.650 m

Aid stations: 3

Time limit: 11 hrs.

Maximal number of participants: 200

ITRA/UTMB points: 2 points

Trail **PUT 17K** runs across the vineyard-covered hills of Pohorje Massif.

Ruše - Meranovo - Pečke hut - Dobnikov križ - Ruše

Start: 24. 8. 2019 at 10 am, Sports park in Ruše

Finish: Sports park in Ruše

Distance: 16,6 km

Elevation gain/loss: +700 m/-700 m

Aid stations: 2

Time limit: 5 hrs.

Maximal number of participants: 200

PARTNER MUNICIPALITIES



PARTNER IN THE IMPLEMENTATION OF THE NATIONAL CHAMPIONSHIP



CONTACT

Organizer: **Društvo Aktivni smo**, Koroška ulica 7, 2342 Ruše, Slovenia; Head of the event **Pohorje Ultra Trail**: Jure Brečko / ++386 41 754 945 / jure.brecko@gmail.com; Head of the event committee **Pohorje Ultra Trail**: Simon Potrč / ++386 31 391 770 / simon.potrc@gmail.com

pohorjeultratrail.si

@ info@pohorjeultratrail.si

PohorjeUltraTrail

pohorjeultratrail